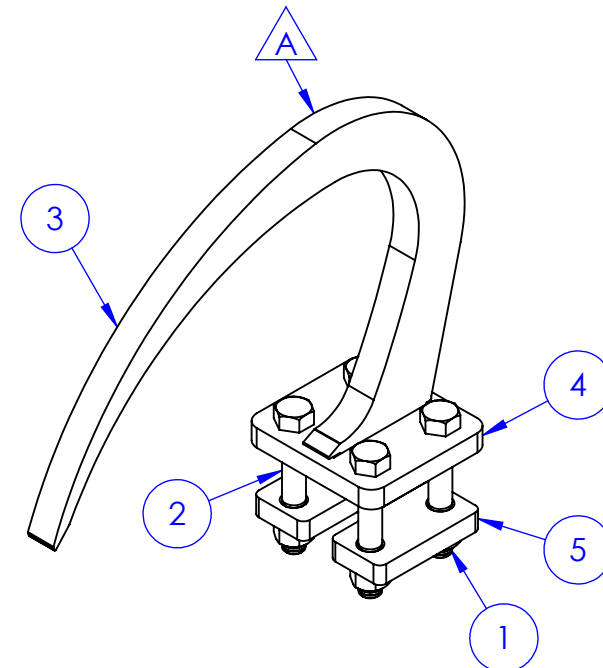
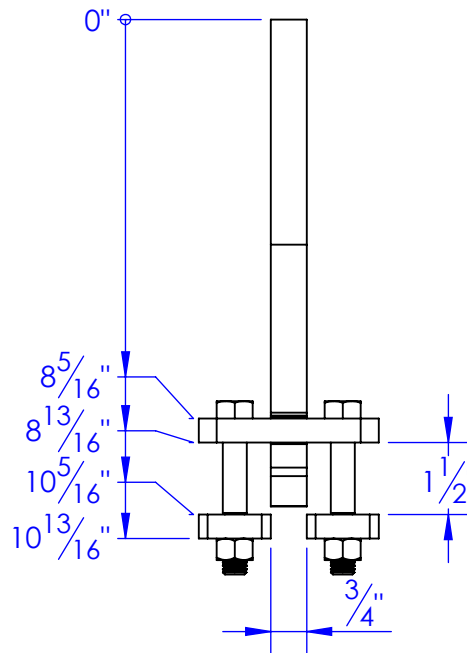
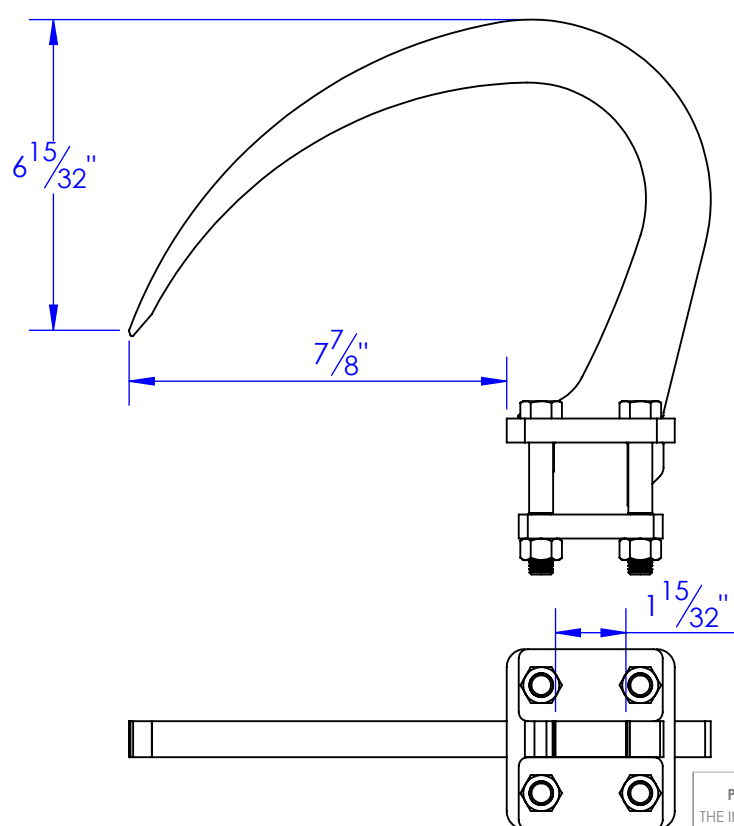
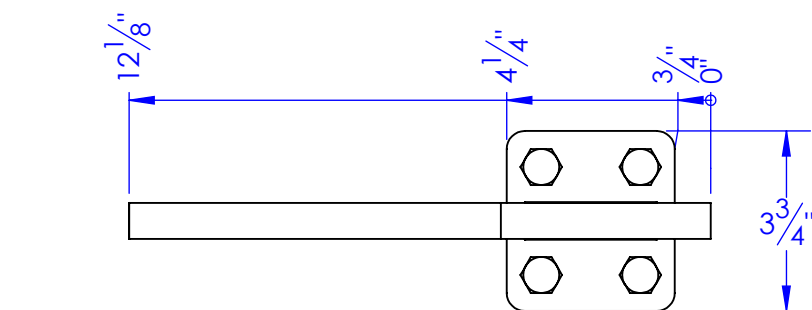


| ITEM NO. | PART NUMBER         | DESCRIPTION                 | DRAWING # | QTY. |
|----------|---------------------|-----------------------------|-----------|------|
| 1        | BO-1/2 HN           | NUT 1/2 HEX                 |           | 4    |
| 2        | BO-1/2x3-1/1 HCS    | BOLT 1/2x3-1/4 HEX          |           | 4    |
| 3        | FP-HG HOOK 10R      | GRABBER GRAPPLE HOOK 10" R  | 50-2200   | 1    |
| 4        | FP-HG HOOK 10R BRKT | 10" GRAPPLE HOOK BRACKET    | 50-2203   | 1    |
| 5        | FP-HG-U-BOLT PLATE  | U-BOLT PLATE FOR HOOKS, HG. | 50-2109   | 2    |

| REVISIONS |                 |          |          |
|-----------|-----------------|----------|----------|
| REV.      | DESCRIPTION     | DATE     | APPROVED |
| A         | INITIAL RELEASE | 1/7/2013 |          |



**PROPRIETARY AND CONFIDENTIAL**  
THE INFORMATION CONTAINED IN THIS DRAWING IS THE SOLE PROPERTY OF TRIPLE C INC. ANY REPRODUCTION IN PART OR AS A WHOLE WITHOUT THE WRITTEN PERMISSION OF TRIPLE C INC. IS PROHIBITED.

|  |     |
|--|-----|
| DIMENSIONS ARE IN INCHES<br>TOLERANCES:<br>FRACTIONAL $\pm 1/16$<br>ANGULAR: MACH $\pm 1$ BEND $\pm$<br>TWO PLACE DECIMAL $\pm 0.010$<br>THREE PLACE DECIMAL $\pm 0.005$ |     |
| MATERIAL   | --- |
| DO NOT SCALE DRAWING   |     |

|  |                |
|--|----------------|
| NAME   | DATE           |
| DRAWN HEATH  | 1/30/2013      |
| PART #   | OP-GR-HOOK-KIT |
| ASM #  |                |
| COMMENTS:<br>GRABBER GRAPPLE<br>10R HOOK HEAVY<br>DUTY KIT |                |

P.O. BOX 248,  
SABETHA, KS 66534

**TRIPLE C**  
INC.

|                  |                            |                  |
|------------------|----------------------------|------------------|
| SIZE<br><b>A</b> | DWG. NO.<br><b>50-1205</b> | REV.<br><b>A</b> |
| SCALE: 1:4       | WEIGHT: 7.89               | SHEET 1 OF 1     |